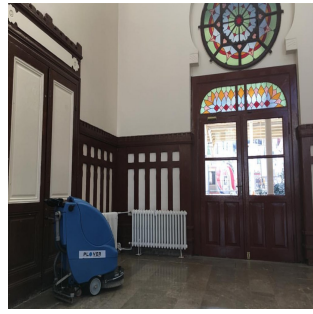


# PLOVER 430 E WALK-BEHIND SCRUBBER DRYER ( ELECTRIC )



## Teknik Özellikler



**Areas of Use**  
500 - 3000 m<sup>2</sup> in the field



**Squeegee Width**  
740 Piece



**Recovery Tank**  
47 Lt



**Power Supply**  
220 Volt



**Brush Motor Power**  
450 Watt



**Productivity Theoretical**  
1500 m<sup>2</sup>/h



**Brush Pressure**  
20 Kg



**Included Accessories**  
Brush Piece



**Cable Length**  
12 mt



**Working Width**  
430 mm



**Solution Tank**  
42 Lt



**Disc Brushes**  
1 Piece



**Suction Motor Power**  
400 Watt



**Weight**  
65 Kg



**Brush Rpm**  
140 Rpm



**Machine Dimensions**  
1060\*960\*455 mm



**Forward Working Speed**  
3,5 km/h



**TMP ENDÜSTRİYEL TEMİZLİK MAKİNALARI SAN  
VE TİC.LTD.ŞTİ.**



Oruç Reis Mh. Giyimkent Sitesi 8. Sk. No: 104 -106 ESENLER / İSTANBUL

( 0212 ) 659 33 60

www.tmpmakina.com

bilgi@tmpmakina.com

444 2 130

( 0212 ) 659 33 62