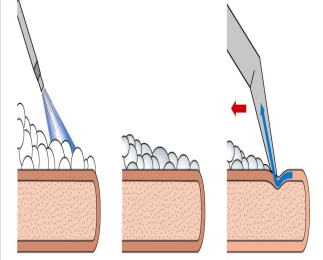


# SANTOEMMA SABRINA DENSE FOAM MACHINE



## Teknik Özellikler



**Areas of Use**  
10 - 250 m<sup>2</sup> in the field



**Recovery Tank**  
14 Lt



**Compressor Motor Power**  
350 Watt



**Pump Pressure**  
4 Bar



**Cable Length**  
10 mt



**Machine Dimensions**  
320\*550\*860 mm



**Solution Tank**  
14 Lt



**Suction Motor Power**  
1500 Watt



**Pump Motor Power**  
70 Watt



**Productivity Theoretical**  
20/30 seats/h



**Weight**  
35 Kg



**Power Supply**  
220 Volt



**TMP ENDÜSTRİYEL TEMİZLİK MAKİNALARI SAN  
VE TİC.LTD.ŞTİ.**



Oruç Reis Mh. Giyimkent Sitesi 8. Sk. No: 104 -106 ESENLER / İSTANBUL

( 0212 ) 659 33 60

www.tmpmakina.com

bilgi@tmpmakina.com

444 2 130

( 0212 ) 659 33 62